

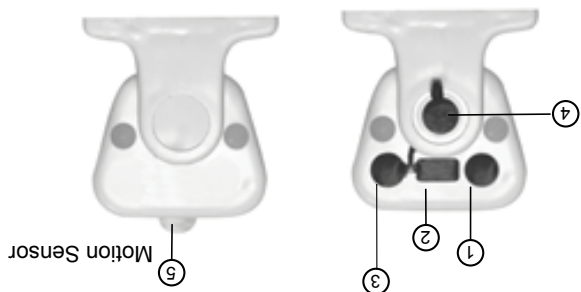
Connections

Power	Lumens	Battery	Solar Panel	Cable
24W	2400lm	3.7V 24AH	18W 6V	5 metres
NSSOLARSENTRY2400RC				
12W	1200lm	3.7V 12AH	10W 6V	5 metres
NSSOLARSENTRY1200RC				

SPECIFICATION

CONTENT OF PACKAGING:	
1 pc	Solar Linear Light
1 pc	Solar Panel + 5m cable + 2 brackets
1 pc	Wall Switch + 4 m cable
1 pc	Remote Control
1 pc	Fixing dowels and SST304 screws.
1 pc	User Manual

- ① Mode Button (100% Power---50% Power---30%+Sensor 100%--OFF)
- ② USB 5V 1A Output: Charge your phone.
- ③ Input connector, to connect the wall switch. ⑥
- ④ Input connector for solar panel.



Warranty:
All NightSearcher products have a 3-year standard warranty on all manufacturing defects and 1-year warranty on all rechargeable batteries from the date of purchase.



Extended Warranty:
From 1st September 2018, customers have the option to extend the warranty of the product to 5 years for manufacturing defects.

Registration of the product must be made within one month of purchase by sending us an email sales@nightsearcher.co.uk. In the message please state in your own words that you would like to register your NightSearcher product for the extended warranty. To view NightSearcher's warranty policy, please visit: <http://nightsearcher.com/en/warranty.html> or scan the QR code.



Safe disposal of waste electrical products batteries:

If at any time, you need to dispose of this product or parts of this product: please note that waste electrical products, bulbs and batteries should not be disposed of with ordinary household waste.

Recycle where facilities exist. Check with your local authority for recycling advice. Alternatively, NightSearcher is happy to take receipt of this product at end-of-life and will recycle it on your behalf.



USER MANUAL Solar LED Linear Lights

- Solar Sentry 1200RC
- Solar Sentry 2400RC



NightSearcher Limited,
Unit 4 Applied House,
Fitzherbert Spur, Farlington,
Portsmouth, Hampshire,
PO6 1TT, UK
T: +44 (0)23 9238 9774
E: sales@nightsearcher.co.uk
W: www.nightsearcher.co.uk



nightsearcher.co.uk

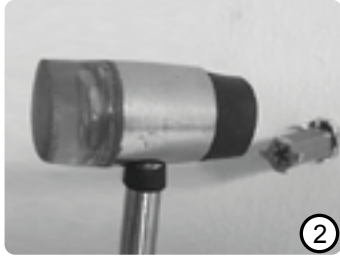


SOLAR PANEL INSTALLATION:

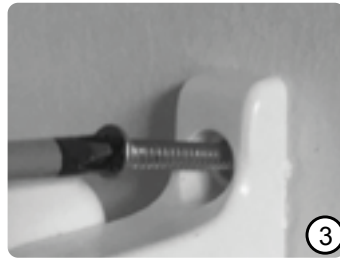
- Select a suitable location to mount the solar panel, ideally a sunny South facing location is best. The brighter the light falling on the face of the panel and the longer it is exposed to light the greater the charge your batteries will receive. We advise putting it on a wall or roof.
- The supplied electric wire is about 5 metres long so bear this in mind when locating the solar panel and light.
- Attach the solar panel using the flat screws and raw plugs provided.
- Adjust the angle of solar panel to make sure it can collect as much sunlight as possible.



1. Drill the hole for screws (4mm screw diameter)



2. Insert the wall plug into the hole, ensure it is flat to the wall.



3. Use screw driver to fix the screws into the wall.



4. Connect light and solar panel using the DC solar cable.



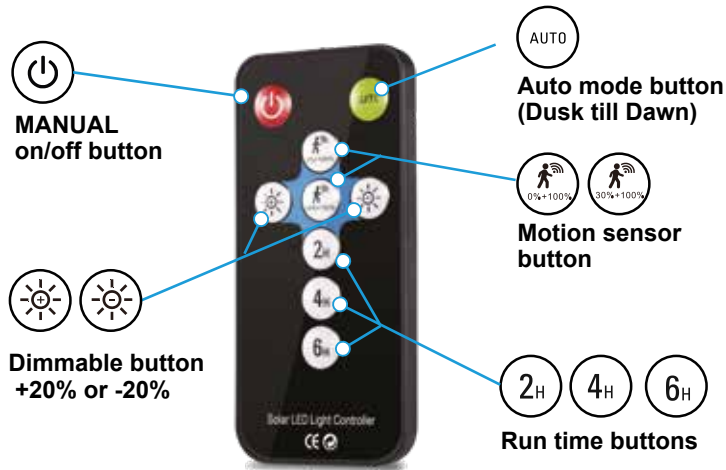
5a. Press button to turn on light,
Press once: 100% power.
Press twice: 50% Power.
Press third: 30%+ 100%
when sensor is triggered.
Press fourth: OFF

5b WALL SWITCH



5b. The solar light can also be controlled using the wall switch:
Press once: 100% power
Press twice: 50% power
Press third: 30% when nobody there and go to 100% power when sensor is triggered
Press fourth: Light off.

5c REMOTE CONTROL



- Motion Sensor Mode**
Press the manual button to switch the light ON.
Select the light output:
(0%+100%) Light is off and changes to 100% when sensor is triggered.
(30%+100%) Light is on 30% and changes 100% when sensor is triggered.
When the sensor is triggered the light will stay on for 1 minute.
- Constant Lighting Mode (Selectable time)**
Press the manual button to switch the light ON
Increase/decrease the light by 20%, 40%, 60%, 80%, 100%.
Press a run time button - 2h, 4h, 6h

CONTROLLING THE LIGHT MODES:

MANUAL Mode
Press the manual button to switch the light ON, (100% continuous light output) The light output can be dimmed by pressing the dimmable button (+ or -) up or down 20%, 40%, 60%, 80%, 100%. The light will turn off after 12hrs, if not turned off by hand, or programmed to Auto mode.

Auto Mode (Dusk till Dawn)
Press the Auto mode button the light will turn on 100% at Dusk and off at Dawn. The light output can be dimmed by pressing the dimmable button (+ or -) up or down 20%, 40%, 60%, 80%, 100%.

Please Note:

Once installation is complete the linear light will work under default mode (Auto Mode).

Battery Status Indicator:

If the battery status indicator on the linear light flashes red once, when you turn it on. This means there is no power in the light and the battery will need to be charged by the solar panel.

The battery has a 5 day stand by mode, run time are subject to the battery charge state.