

SAFATEX PL

ATEX LED 67 Lumen Penlight. Zone 0 and mining approved.



KEY FEATURES AT A GLANCE:

- ATEX Approved to Zone 0 and for use in mines
- 67 Lumens providing a 41 metre beam
- CREE® XG2 High Output LED
- Tail mounted switch, cycling through on/off
- Powered by 2 No. 1.5V AAA type batteries (not supplied)
- Runtime of up to 20 hours and 40 minutes
- Battery compartment accessible only by use of a tool (supplied)
- Safety gas release valve
- Chemical and corrosion resistant non conductive ABS housing
- Supplied with pocket clip and wrist strap
- 142mm x 30mm. 41g net weight, 65g with batteries.
- IP67 Rated

Certification and Standards

ATEX Certification

Ex: I M1 Ex ia I Ma
Ex: II 1G Ex ia IIC T5 Ga
DEMKO 16 ATEX 1661X

IECEX Certification

Mining: Ex ia I Ma
Gas: Ex ia IIC T5 Ga
IECEX UL 16.0015X

UL Certification

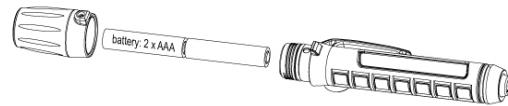
Class I DIV 1&2 Groups A B C D
Class II DIV 1&2 Groups E F G
Class III
Temp Code: T4 IP67
File Number E324236

The NightSearcher SAFATEX PL is part of the NightSearcher SAFATEX ATEX portable range of LED lighting. It is UL, IECEX and ATEX certified as well as CE, RoHS and REACH accredited. It is approved for use in mines and certified to ATEX Zone 0 for gas.

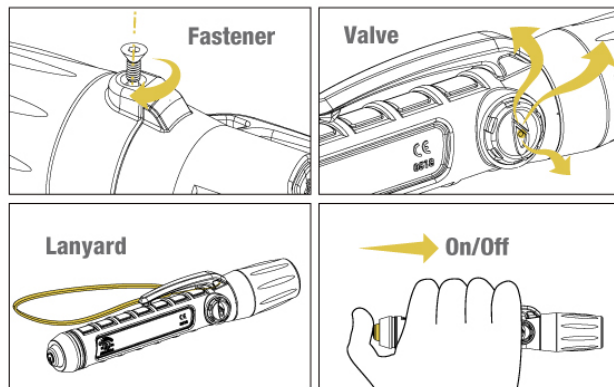
The SAFATEX PL is a tough, very compact flashlight with a light output of 67 lumens from a CREE XP-G2 high output LED.

The housing is made from ABS and covered in a synthetic rubber coating, is resistant to corrosion and a selection of chemicals, it is also non conductive. The rubberised coating provides extra grip.

A pen style clip is built into the flashlight making it perfect for attaching to belts, loops and pockets. It is supplied with a wrist strap for extra security.



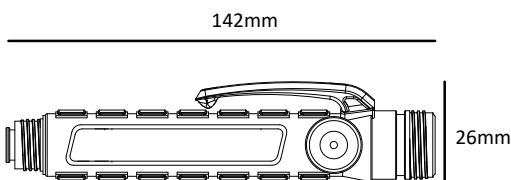
Battery Replacement



PRODUCT CODE: NSSAFA-FLA-PL

NightSearcher

SAFATEX - INTRINSICALLY SAFE LIGHTS



Register your purchase on the NightSearcher website to upgrade your warranty from 3 to 5 years, free of charge. www.nightsearcher.co.uk

