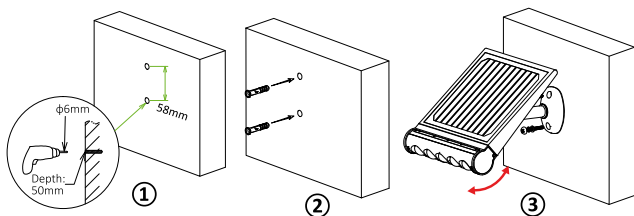




Supplied with:  
1 x Solar Light  
4 x Screws  
2 x Stickers  
4 x Wall plugs

## Installation:

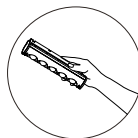
### Wall Mounted (Integrated)



The recommended mounting height is 2-4Mtrs.

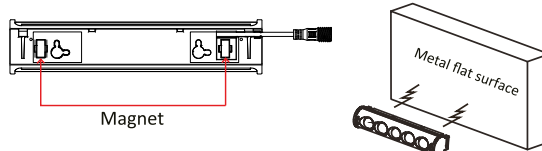
1. Drill 2 holes ( $\phi 6\text{mm}$ , depth 50mm) with a spacing of 58mm.
2. Fix the expansion plugs in the holes.
3. Use screws with flat & spring washers to fix the lamp on the wall.  
Adjust solar panel angle and lighting direction as needed.

### Portable Lamp



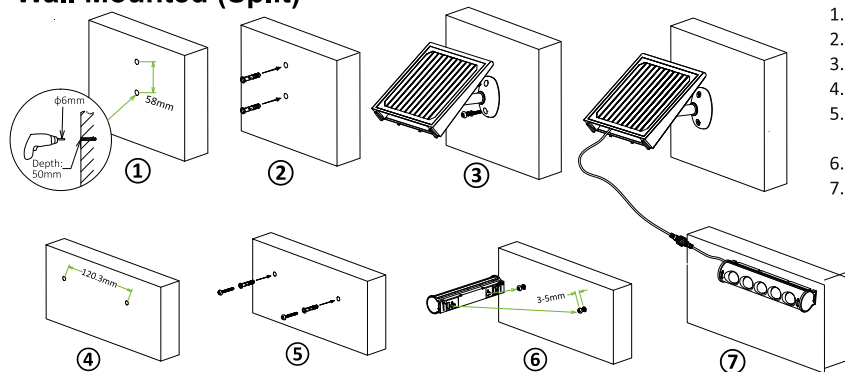
- Make sure that the lamp has enough charge to carry.
- To charge the lamp, connect the cable of the solar panel to the lamp.
- Light sensor will not work if the lamp is not connected in solar panel.

### Lamp Wall Mounted with Magnet



1. Check the magnet on the back. Make sure there's no object attached on the magnet.
2. Fix the lamp on the metal flat surface.

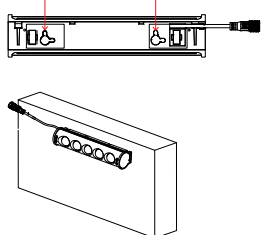
### Wall Mounted (Split)



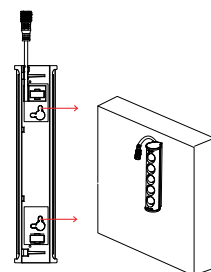
1. Drill 2 holes ( $\phi 6\text{mm}$ , depth 50mm) with a spacing of 58mm.
2. Fix the expansion plugs in the holes.
3. Use screws with flat & spring washers to fix the lamp on the wall.
4. Drill 2 holes ( $\phi 6\text{mm}$ , depth 50mm) with a spacing of 120.3mm.
5. Fix the expansion plugs in the holes, then fix the screws into the expansion plugs, keeping the screws protruding 3-5mm.
6. Hang the lamp on the screws.
7. Connect the cable of solar panel to lamp.

### Hanging Lamp

#### Horizontal Hanging

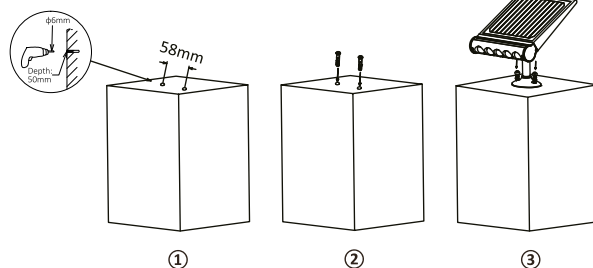


#### Vertical Hanging



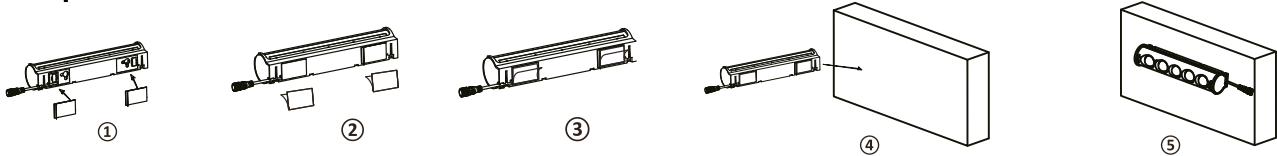
1. Drill 2 holes ( $\phi 6\text{mm}$ , depth 50mm) with a spacing of 120.3mm.
2. Fix the expansion plugs in the holes, then fix the screws into the expansion plugs, keeping the screws protruding 3-5mm.
3. Hang the lamp on the screws.

### Pillar Mounted



4. Drill 2 holes ( $\phi 8\text{mm}$ , depth 50mm) with a spacing of 58mm.
5. Fix the expansion plugs in the holes.
6. Use screws with flat & spring washers to fix the lamp on the ground.  
Adjust solar panel angle and lighting direction as needed.

## Lamp Wall Mounted with Stickers



1. Fix the position of the sticker on the lamp.
2. Remove the sticker cover on the lamp.
3. Turn on the lamp.
4. Place 2 stickers properly onto the Two-direction Hanging Holes of the lamp.
5. Fix the lamp on the wall.

## Operating the security light

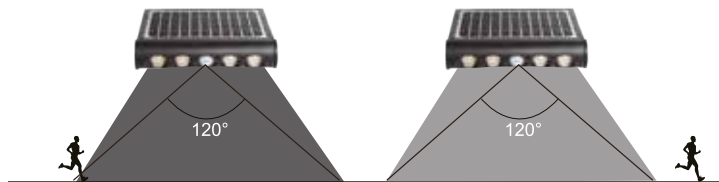


**On/Off/Select working mode**

Please rotate the lamp head and press the button to select working mode.

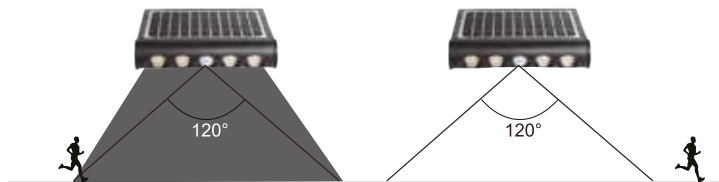
1. Press the button 1st time, lamp turns on to Mode A.
2. Press the button 2nd time, lamp shines once and turns to Mode B.
3. Press the button 3rd time, lamp turns off.

### Mode A:



#### When battery power is more than 30% :

Lamp automatically lights up at night and turns to 100% brightness when motion is detected in the range  $\leq 8$ mtrs, then dim to lower brightness after 20 seconds of no motion.

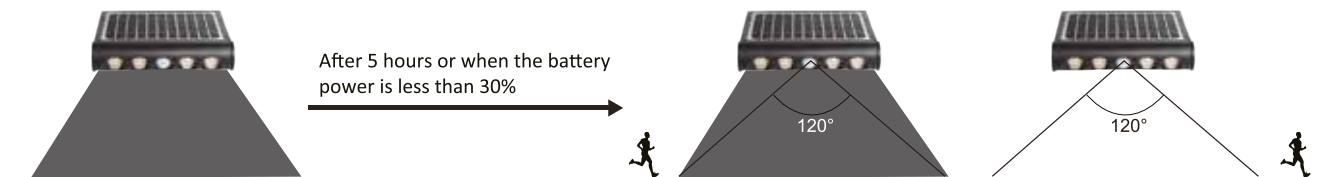


#### When battery power is less than 30% :

Lamp automatically lights up at night and turns to 100% brightness when motion is detected in the range  $\leq 8$ mtrs, then turns off after 20 seconds of no motion.

### Mode B:

Lamp automatically lights up at night and keep 100% brightness, after 5 hours or when battery power is less than 30%, lamp turns to Energy Saving Mode: Lamp automatically turns to 100% brightness when motion is detected in the range  $\leq 8$ mtrs, then turns off after 20 seconds of no motion.



If at any time, you need to dispose of this product or parts of this product: please note that waste electrical products and batteries should not be disposed of with ordinary household waste. Recycle where facilities exist. Check with your local authority for recycling advice. Alternatively, NightSearcher is happy to take receipt of this product at end-of-life and will recycle it on your behalf.



To view and download the full manual in multiple languages please go to <https://nightsearcher.co.uk/en/products-manuals.html> Or scan this QR code.



# NexSun

NexSun is a brand of NightSearcher Ltd.  
NightSearcher Limited, Unit 4 Applied House, Fitzherbert Spur,  
Farlington, Portsmouth, Hampshire, PO6 1TT, UK  
T: +44 (0)23 9238 9774 E: [sales@nightsearcher.co.uk](mailto:sales@nightsearcher.co.uk)

All NexSun products have a 3 year standard warranty on all manufacturing defects and 1 years on rechargeable batteries from the date of purchase. Please visit [www.nexsun.co.uk](http://www.nexsun.co.uk) for warranty information, proof of purchase is required.



|                |                 |
|----------------|-----------------|
| Product weight | 934g            |
| Product size   | 241x268x76mm    |
| Part No.       | NEXSUN-CORSICAN |